

Mandate to the Texas Workforce Investment Council

The Texas Workforce Investment Council (Council) promotes the development of a well-educated, highly skilled workforce for Texas, and advocates for an integrated workforce system to provide quality, relevant services to address the needs of Texas business and workers.

Created under both state and federal law, the Council assists the Governor and the Legislature with strategic planning for and evaluation of the Texas workforce system. The Council also serves as the State Workforce Investment Board under the federal Workforce Investment Act of 1998.

Texas Government Code, Chapter 2308, requires the Council to monitor the operation of the state's workforce system to assess the degree to which the system is effective in achieving state and local goals and objectives.

In addition, state statute requires the Council to provide annual reports to the Governor and the Legislature, including an annual report on programs that focus on welfare to work initiatives.

The state's workforce system is comprised of a number of programs, services and initiatives administered by eight state agencies and local workforce development boards, as well as independent school districts, community and technical colleges and local adult education providers.

System partners are responsible for the delivery of over twenty workforce education and training programs and related services, as well as education programs that support career preparation and advancement.

Texas Workforce Investment Council
1100 San Jacinto, Suite 1.100
Austin, Texas 78701
www.governor.state.tx.us/twic

Texas Workforce Investment Council
December 2009

Welfare to Work Initiatives in Texas Report 2009

Welfare to Work Initiatives in Texas: Report 2009

The Texas Workforce Investment Council (Council) is pleased to present this tenth annual report, *Welfare to Work Initiatives in Texas: Report 2009*, as mandated by Texas Government Code 2308.101(14). This report was approved at the Council's December 2, 2009 meeting.

This report provides an overview and update on the programs and initiatives that serve adult recipients of cash assistance, known as Temporary Assistance for Needy Families (TANF). Information on each program includes purpose, population served, types of services, and numbers served for programs administered by the Texas Workforce Commission, Texas Education Agency, Texas Higher Education Coordinating Board, and Health and Human Services Commission. Performance trend data are shown, including data for the most recent available 12-month period.

Welfare to Work Initiatives in Texas: Report 2009 has two sections. The first, *Programs that Directly Serve TANF and State Program Recipients*, features programs specifically designed for recipients of TANF. The second, *Other Programs Available to TANF and State Program Recipients*, features programs that serve TANF and State Program (SP) recipients, but serve others as well. Programs featured in the report include:

- The Choices employment and training program provides work readiness, job search, training, and support services for adults receiving cash assistance.
- The Self-Sufficiency Fund provides customized training for adult recipients of TANF as well as other individuals at risk of becoming dependent on public assistance.
- The Adult Basic Education Program provides basic education, GED preparation, and English as a second language instruction to adults with low levels of literacy.

Since the inception of welfare reform in the mid-1990s, partner agencies in the Texas workforce system have worked diligently to assist thousands of individuals to successfully transition from public assistance to employment. Texas has also integrated many aspects of its workforce system, positioning the State for continued success as system partners serve Texans who are adversely affected by the current economic conditions.

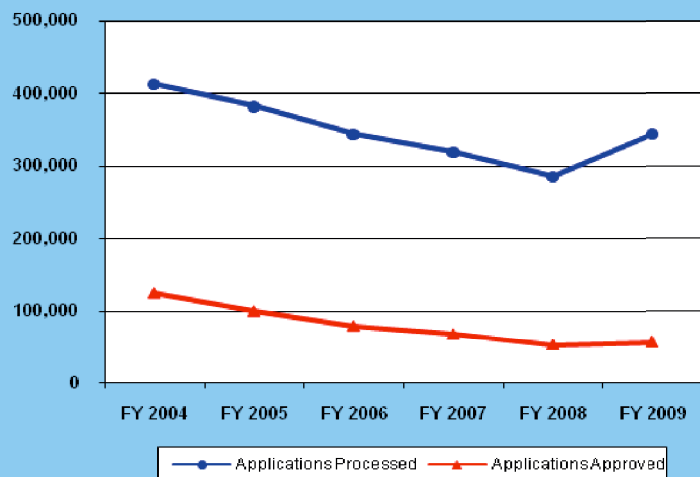
Workforce Programs and Initiatives
in Texas that Focus on Welfare to Work

Programs That Directly Serve Temporary Assistance for Needy Families and State Program Recipients

Temporary Assistance for Needy Families and the State Program

Temporary Assistance for Needy Families (TANF) is the federal cash grant program for eligible low-income adults with children. The State Program (SP) is the state funded cash assistance program for eligible low-income two parent families with children. The Texas Health and Human Services Commission (HHSC) is the state agency in Texas designated for TANF and SP administration. HHSC collaborates with community partners to identify, develop, and expand resources to encourage personal independence. HHSC is responsible for eligibility determination, eligibility-related issues such as sanctions, assigning exemptions, and tracking the number of months a recipient is on TANF for state and federal time limits. HHSC administers Medicaid and Food Stamps, two additional support programs utilized by TANF and SP recipients. The program results below show the number of annual applications for TANF and SP that were processed and approved over a six year period.

**Total TANF & SP Applications Processed & Approved
FY2004-FY2009**



Federal Administrative Agency: U.S. Department of Health and Human Services, Administration for Children and Families
State Administrative Agency: Health and Human Services Commission
Purpose of Program: Cash grant program for eligible families
Participant Eligibility: Based on income and size of family
Types of Services: Eligibility determination, eligibility-related policies, administration and distribution of cash grants

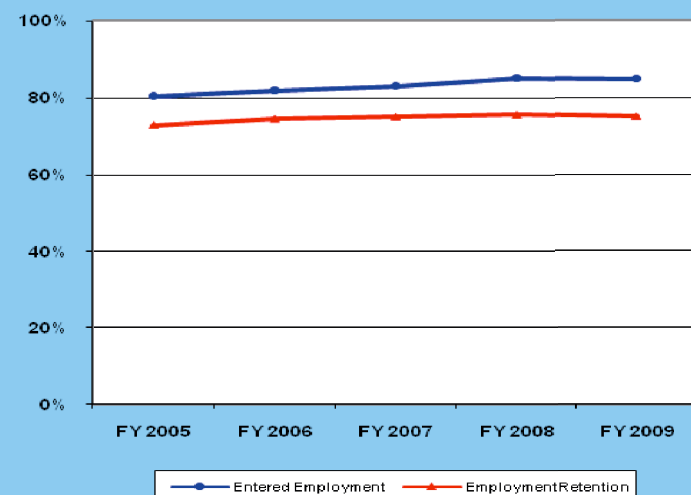
FY 2009 Program Results:
Number Applications Processed: 344,137
Number Applications Approved: 57,245

Programs That Directly Serve Temporary Assistance for Needy Families and State Program Recipients

Choices

Choices, Texas' employment and training program for adults receiving cash assistance, has continued to successfully assist TANF and SP adults to enter employment. Through its "Pay for Performance/Work First" model, the program serves adults by preparing, training, and placing them in work. The Choices program is administered by the Texas Workforce Commission and by local workforce development boards through contractors that operate workforce centers across the state. As indicated below, in FY 2009 Choices served 31,042 adults, resulting in an entered employment rate of 84.7%. The employment retention rate shows steady improvement from 72.9% in FY 2005 to 75.1% in FY 2009.

**Choices Program Entered Employment Rate & Employment Retention Rate
FY2005-FY2009**



Federal Administrative Agency: U.S. Department of Health and Human Services, Administration for Children and Families
State Administrative Agency: Texas Workforce Commission
Purpose of Program: Employment and training activities for TANF and SP adults
Target Population: TANF and SP adults
Participant Eligibility: Adults required or volunteering to participate in work activities
Types of Services: Job readiness activities, vocational and other training, educational activities, job search, support services, case management

FY 2009 Program Results:
TANF and SP Adults Served: 31,042
Entered Employment Rate: 84.7%

Other Programs Available to Temporary Assistance for Needy Families and State Program Recipients

Self-Sufficiency Fund

The Self-Sufficiency Fund provides training for employment opportunities for adult recipients of TANF and individuals at risk of becoming dependent on public assistance. To apply for a Self-Sufficiency Fund grant, a business, business consortium, or trade union partners with an eligible grant recipient. The grant recipient is responsible for providing the training. Eligible recipients must be a community or technical college, the Texas Engineering Extension Service (TEEX), or a local community-based organization. The training is customized to the requirements of the business. The business agrees to hire the individuals who successfully complete the training. The program results are shown below and reflect a decrease from previous years due to a change in policy limiting grants to only those employers willing to exhaust the TANF/Choices applicant pool.

Federal Administrative Agency: None
State Administrative Agency: Texas Workforce Commission
Purpose of Program: Provides customized training
Target Population: Adult TANF recipients, and individuals at risk of becoming dependent on public assistance
Participant Eligibility: Eligible for above named programs
Types of Services: Customized training with grants awarded to public community and technical colleges, TEEX, and community-based organizations

FY 2009 Program Results:
Number Trainees Served: 1,620
Number of Participating Employers: 45

Adult Education

The Adult Education program is authorized under Title II of the Workforce Investment Act, titled Adult Education and Family Literacy. The program provides services to adults to become literate and to obtain the knowledge and skills necessary for employment and self-sufficiency. These skills might include academic skills training, workforce readiness, parenting skills, English as a second language, or GED preparation. Adult education providers are strongly encouraged to form collaborative partnerships with local workforce development boards, local support service providers, and employers. The program results below show the number of TANF and SP adults in adult education services.

Federal Administrative Agency: U.S. Department of Labor and U.S. Department of Education
State Administrative Agency: Texas Education Agency
Purpose of Program: Provide basic education to adults
Target Population: Adults
Participant Eligibility: None
Types of Services: Adult basic education, English as a second language, GED preparation, workforce readiness, and similar services

FY 2009 Program Results:
Number TANF and SP served: 9,485
Number of Contact Hours: 814,192
Percent Completing Level: 47%
Percent Continuing to Next Level: 42%
Number of GEDs Completed: 617
Percent of GEDs Completed: 55%

Other Programs Available to Temporary Assistance for Needy Families and State Program Recipients

Workforce Investment Act (WIA), Title I-B

TANF adults are eligible to receive Workforce Investment Act (WIA) services. Core services are available to all adults and intensive services are available to adults who are unable to find employment through core services alone. Intensive services are individualized and may include assessments, individual counseling, employment planning, and prevocational and vocational training. WIA also offers services to dislocated workers unemployed because of plant closures, company downsizing, or significant changes in market conditions.

Federal Administrative Agency: U.S. Department of Labor
State Administrative Agency: Texas Workforce Commission
Purpose of Program: Employment and training for adults
Target Population: Adults seeking employment, employment information, or upgrading of skills
Participant Eligibility: None for core services
Types of Services: Core services include skill assessment, labor market information, reports on training programs, job search assistance, and training.

FY 2009 Program Results:
Number of Adults Served: 29,645
Number of Dislocated Workers Served: 16,598

Application Assistance Program

Supplemental Security Income (SSI) and Retirement, Survivors, and Disability Insurance (RSDI) are two federal programs that provide cash assistance and other benefits for the disabled or those otherwise unable to work. A portion of the TANF and SP population is often eligible for these programs. The Texas Health and Human Services Commission (HHSC) assists TANF and SP individuals with the application process. Due to program changes, the reporting agency (HHSC) no longer tracks the total number of clients who are given this assistance.

Federal Administrative Agency: None
State Administrative Agency: Health and Human Services Commission
Purpose of Program: To assist TANF and SP individuals in the application process for SSI and RSDI
Target Population: TANF and SP adults
Participant Eligibility: Same as TANF
Types of Services: Application assistance, assistance with paperwork and gathering documents to aid in the application process